



## Point of Sale Data Mining Tool with Video Verification

POS Miner is a point of sale security and data mining tool, that allows the user to monitor in real time key features on your Point of Sale program. This is achieved by overlaying the POS data onto CCTV footage and by mining the POS database. The tool can be used in real time and any suspicious activity reported and extracted, monitoring key features such as refunds, sending alerts to key personal, or by data mining the POS database and providing CCTV footage with the transaction overlaid. Alerts can be configured to warn of any event, such as cash refunds. These can be sent to the manager either real time or as a batched email.

The tool can be used to build case folders for fraudulent cases and disciplinaries, Customer disputes over unpacked items, and Cashier performance Monitoring.

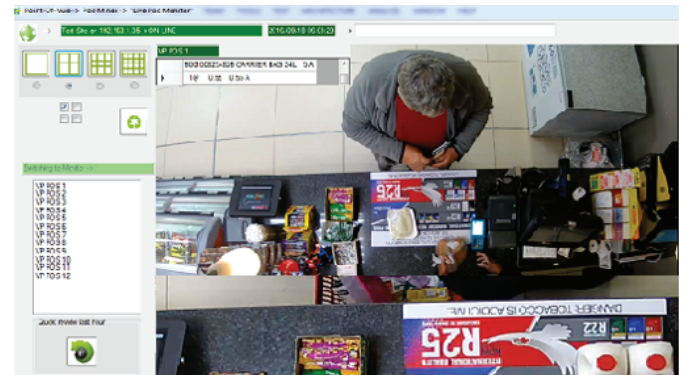
The POS-Miner system has been designed for groups of stores where they are interspersed over the country or internationally. The software is designed to give back some of the control that you lose from having remote store's and reduce shrinkage through the point of sale. The system reduces through pre-built algorithms (there are over 500 in the system) or through your configured algorithms, the systems catches sequences of events that can potentially be problematic and displays the transactional data with video verification.

These data mines can be used to highlight problematic fraud areas in real time or can be sent to you in the form of a batched alert email. For high risk features such as refunds or cash drawer open without a transaction present, we can send the alerts real time to one or more recipients, thereby stopping problems as they occur.

When fraud is detected the transactional data is watermarked to the CCTV footage and this can be exported to a case file, for collecting evidentiary Footage, Snap Shot

pictures and notes. This case file can reside locally, on a safe server, or in the cloud.

POS Miner can be used in conjunction with our plato forecourt package, for monitoring pump attendant performance, number plate recognition for drive aways, black listing and number plate recording for account verification, and dispute reconciliation.



# POS Miner

## Point of Sale Data-Mining Tool With Video Verification

- Cashier Performance Monitor, and analytical report
- User Friendly interfaces, with user Security Levels
- Analogue, and IP CCTV Hardware Support
- Reduced Shrinkage, through Point of sale, and scales
- Advanced data-Mining with Video Verification
- Disciplinary Case Files
- Facilities for customer Query resolution
- Realtime, and Batched alerts for events such as Refunds
- Instore, Regional, and Group-wise Data-Mining
- Automated exception reporting

## POS Miner

- Reduce shrinkage and improve the customers experience through the point of sale.
- Provides instant transaction playback and can be used as a grading tool to measure cashier performance.
- Complete investigation tool for resolution of POS discrepancies.

## Targeted Scale-Review

- Data mining search for specific items
- Review transactions as thumb nails at print time. (up to 64 views zoomed in to scale bed)
- Easily detect incorrect item PLU selected to reduce "sweethearting"

## Retail-Vue

- Know your customers
- Queue Management

- Customer Flow Analysis (Heat Mapping)
- Customer demographic (Age, Gender)
- Customer reaction to specials (Age, gender, linger)
- Customer mood to purchase
- Conversation rate calculation

## Restaurant-Vue

- Monitor table from arrival to departure
- Stitched video reporting for entire meal
- Measure waitron performance, food preparation performance etc
- Know your customer
- Customer demographic & mood analysis
- Extensive reporting

## Plato-Forecourt

- Forecourt and shop video integration
- Review all sales correlated to video
- Vehicle number plate recognition on all lanes
- Local and National Black/White listing
- Full data mining engine on all sales
- Extensive reporting

## Plato-Silent-Access

- Vehicle plate identification system
- Push messaging via SMS/Push Notification
- Trigger Warning systems
- Trigger Welcome systems
- Full data mining engine on all detections
- Cloud based

## Plato-Strict-Access

- High Security Access Control Systems
- Designed to meet customers' requirements
- Off-site dual pass access authentication
- Full data mining engine
- Cloud based

**For more information contact: Jon Green, Email: [jon@pos-secure.co.za](mailto:jon@pos-secure.co.za), Mobile: +27 (0) 79 022 0255**

## About IQ Retail (Pty) Ltd

IQ Retail (Pty) Ltd is a software development company that provides expertise in complete financial and business administration solutions. IQ Retail has been active in the development of business systems specialising in the accounting and retail management environment since 1986. In this highly competitive market, IQ Retail has grown to become one of the premier providers of innovative and strategic business solutions.

## Contact IQ Retail

SA +27 21 880-0420

| 0861 IQ INFO / 0861 47 4636

| [info@iqretail.co.za](mailto:info@iqretail.co.za)

| [www.iqretail.co.za](http://www.iqretail.co.za)