

IQ VOLUMETRICS

P R E F A C E

This is the IQ Volumetrics reference guide for IQ Business & IQ Enterprise software systems.

The document will aid in the understanding and configuration of the IQ Volumetrics for it to function correctly.

Although every effort has been made to keep this IQ Volumetrics document up to date, some of the screen examples may not be 100% the same as the ones reflected in previous versions of IQ Volumetrics. This is due to the continuous development and improvement of the IQ System.

Unfortunately, there will be a discrepancy from time to time. We do apologize for the inconvenience that it may cause.

Should you feel that the IQ Volumetrics document is inadequate or requires further explanation or more and better examples, please feel free to email us.

We would love to have some feedback to improve the IQ Volumetrics document in some way or another.

Regards,

IQ Retail (PTY) LTD



CONTENTS

IQ VOLUMETRICS	4
INTRODUCTION	4
SETUP	5
VOLUMETRICS ENABLED.....	6
STOCK MAINTENANCE	6
SELLING PRICES FOR VOLUMETRICS	8
UNIT OF MEASURE.....	8
DISALLOW DECIMALS	9
PROCESSING	10
STOCK TAKE	11

IQ VOLUMETRICS

INTRODUCTION

The Volumetrics module has been designed to provide for modifications to Volumetric input and calculations to support perimeter calculations with a rounding factor. All the associated dimension fields can be completed as predefined values within Stock Maintenance and all dimension fields support decimal places.

NOTE: Remember that the retail and selling prices will be calculated as: Rx per Volumetric calculation.

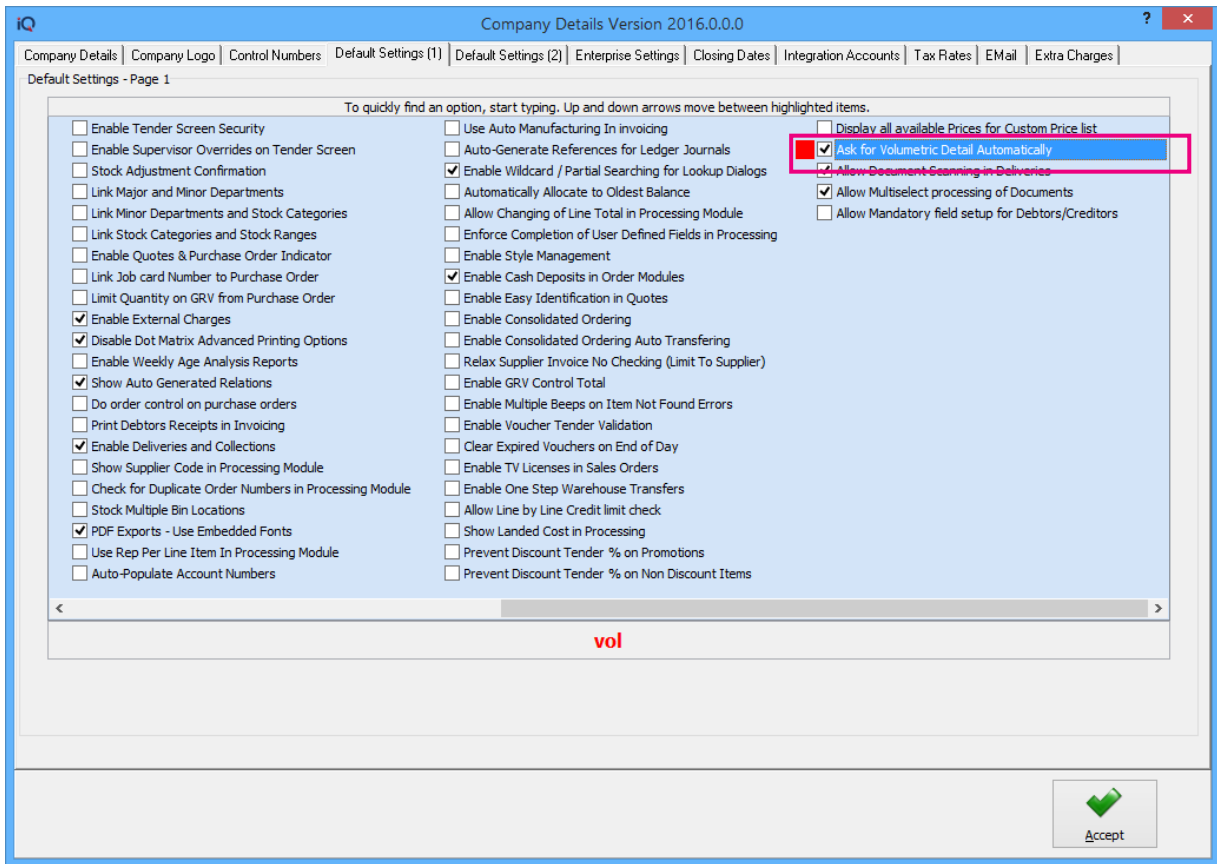
An additional system setting has been introduced to enforce the automatic pop-up action of the Volumetric input screen during processing in the processing modules. This screen will pop-up the moment the cursor reaches the quantity field for the first time. This setting is however not compulsory, in other words the Volumetrics will still work if it has not been set up.

The following Volumetrics have been defined:

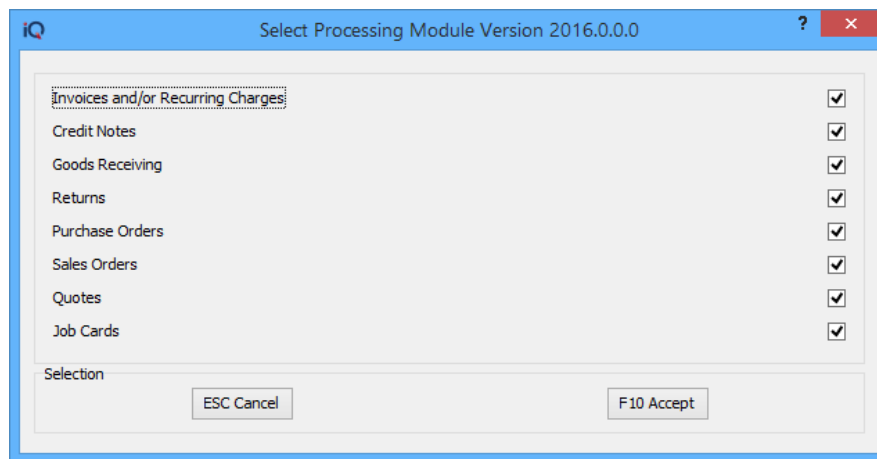
- CUBES METERS – length x width x height in meter
- CUBES MILLIMETERS – length x width x height in millimeter
- GRAMS – weight in grams
- KILOGRAMS – weight in Kilograms
- LINEAR – measure the perimeter of a rectangular shape, calculated as:
 $(2 \times \text{length}) + (2 \times \text{width}) = 2 \times (\text{length} + \text{width})$
- LINEAR MILLIMETRES – perimeter in millimeters
- LINEAR SQUARE METERS – perimeter in meters
- LINEAR SQUARE MILLIMETERS – perimeter in millimeters
- LITERS – volume in liters
- METERS – length in meters
- MILLILITERS – volume in milliliters
- MILLIMETERS – length in millimeters
- SQUARE METERS – length x width in meters
- SQUARE MILLIMETERS – length x width in millimeters
- UNITS – no Volumetric specifications required

SETUP

The automatic pop-up of the Volumetric capture screen can be enabled in the Default Settings. From the IQ main menu → Utilities → Setup → Company Details → Default Settings (1), tick the option “Ask for Volumetric Detail Automatically”. The Volumetrics capture screen will pop-up automatically, if this option is enabled. If it is disabled, the user will have to click on the drop-down arrow next to the quantity field, for the Volumetrics capture screen to pop-up.



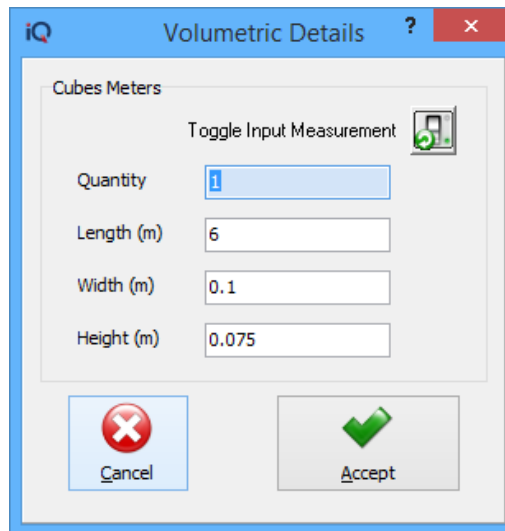
The user must select in which of the processing modules the Volumetrics pop-up screen must appear:



NOTE: Volumetrics will not be enabled in Point of Sale (Cash Sales), it will only be available for transactions done through the processing module.

VOLUMETRICS ENABLED

If the Volumetrics pop-up was enabled and the item was for example set to measure in “Cubes Meters”, the following screen will appear once the user gets to the quantity field during processing the selected processing transactions:



NOTE: The Volumetrics setting is **not** a **centralised** or **synchronised** setting. In other words, the user will have to set up the “Ask for Volumetrics Detail Automatically” in each of the companies where it will be used.

NOTE: This setting will be implemented as a global company setting. In other words, it will apply to all the stock items on the stock list for the selected company.

STOCK MAINTENANCE

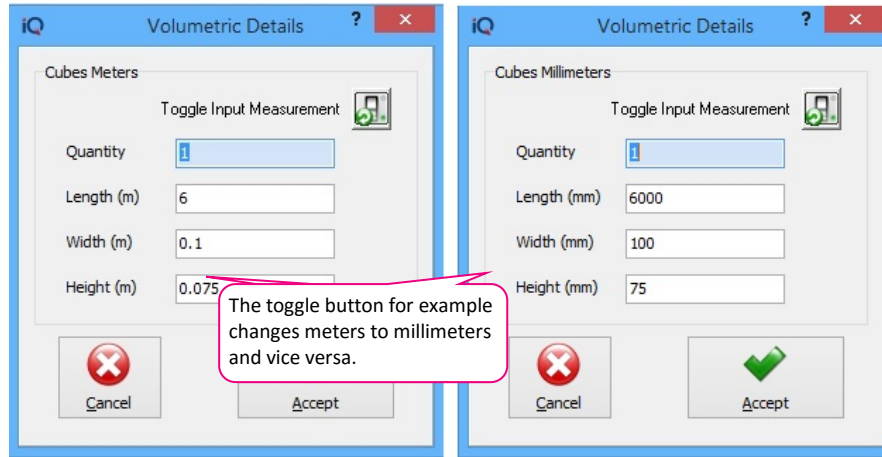
The user can enter predefined Volumetrics values for each of the Volumetric settings per stock item.

NOTE: All existing stock where Volumetrics have been specified, will have to be updated manually. No changes will be made to existing data.

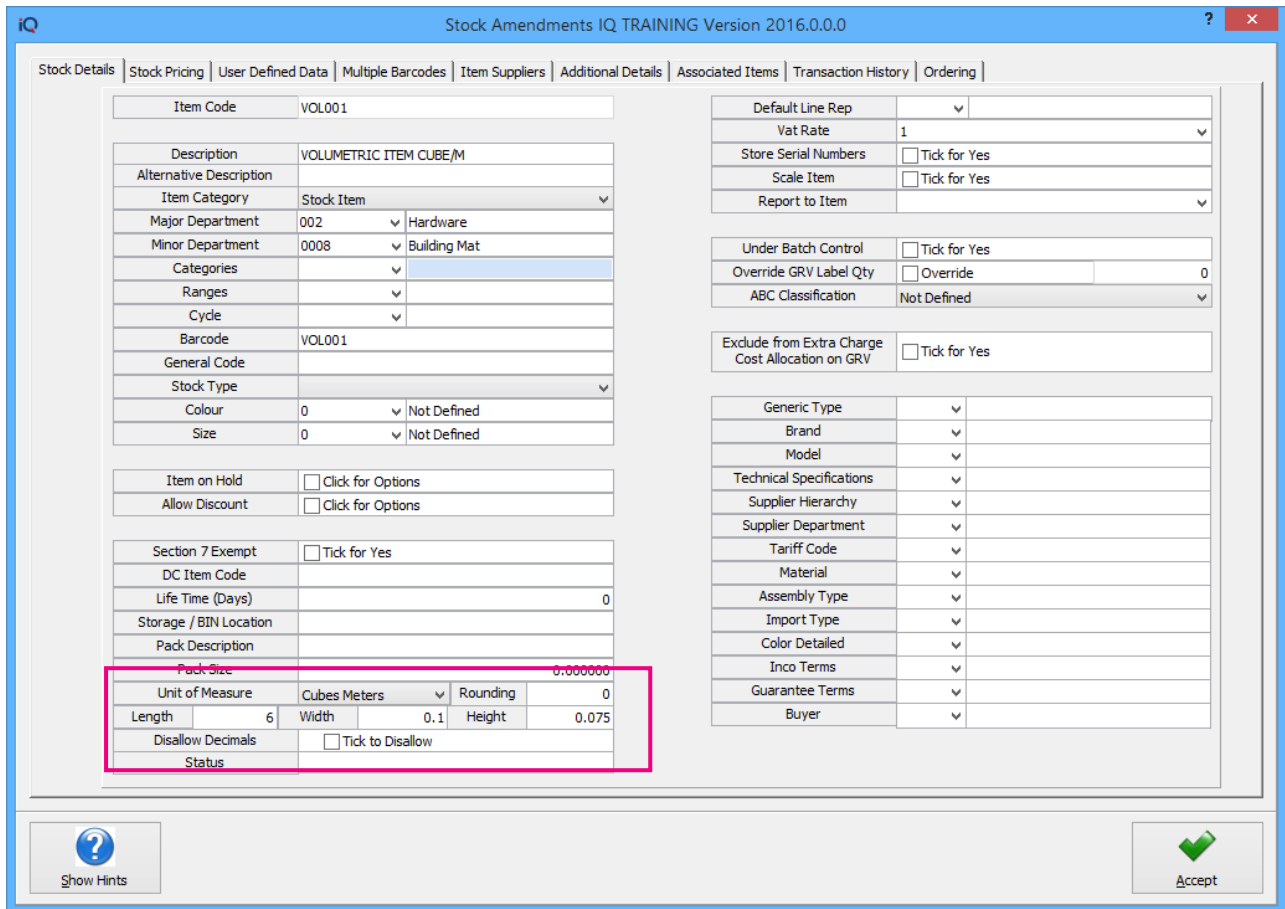
For each of the following Volumetric types, the system will allow the user to capture a default measurement for capturing during processing modules for example invoicing:

- Squares (meters/millimeters) – based on the assumption that default holding measurement for squares is meters.
- Linear (meters/millimeters) – based on the assumption that default holding measurement for linear is meters.
- Grams, Kilograms and Tons.
- Meters and Millimeters
- Linear Squares (meters and millimeters)

The Volumetric capture screen will provide the user with a conversion (toggle) button between holding and input measurements. This serves for information purposes and ease of use for input.



From the IQ main menu → Stock → Maintenance → Add (to add new item) or Edit (to change an existing item).



NOTE: The system work on the assumption that the default holding measurements for squares and linear is meters.

IMPORTANT: Remember to remove the tick to Disallow Decimals when working with Volumetrics.

SELLING PRICES FOR VOLUMETRICS

Stock Amendments IQ TRAINING Version 2016.0.0.0

Stock Details | Stock Pricing | User Defined Data | Multiple Barcodes | Item Suppliers | Additional Details | Associated Items | Transaction History | Ordering |

Setup of Stock Selling Prices

Prices Type	Exclusive	Inclusive	Markup %	G.P. %	Markup % (Latest Cost)	G.P % (Latest Cost)
Retail Price	175.4386	200.00	0.00	100.00	0.00	100.00
Wholesale Price	0.0000	0.00				
Price 3	0.0000	0.00				
Price 4	0.0000	0.00				
Alternative Price 3	0.0000	0.00				
Alternative Price 4	0.0000	0.00	0.00	0.00	0.00	0.00
Alternative Price 5	0.0000	0.00	0.00	0.00	0.00	0.00
Alternative Price 6	0.0000	0.00	0.00	0.00	0.00	0.00
Alternative Price 7	0.0000	0.00	0.00	0.00	0.00	0.00
Alternative Price 8	0.0000	0.00	0.00	0.00	0.00	0.00

The Retail Selling Prices will be calculated @ Rx/ (Volumetric values)

Recommended Retail Based On :
* Recommended G.P % Not Assigned

Cost Level 1	0.00	Average Cost	0.00
Cost Level 2	0.00	Latest Cost	0.00
Cost Level 3	0.00	Base Cost	0.00
Cost Level 4	0.00	Future Cost	0.00
Cost Level 5	0.00	Previous Cost	0.00
		Manager Cost	0.00

Pricing

Recommended GP%	0.00
Price Variant Group	▼
Unit Cost	0.0000
Future Cost	0.00

Show Hints | Accept

UNIT OF MEASURE

NOTE: The user must take great care when using millimeter or milliliter units to measure stock items in.

Select the appropriate Unit of Measure from the dropdown arrow at the end of the field.

ROUNDING

The user has the option to enter a predefined rounding factor for Volumetric measurements to be used during calculations.

Rounding will be supported as follows:

- UNITS – Not applicable
- SQUARES (length x width) – round both length and width to default measurement
- CUBES (length x width x height) – round length, width and height to default measurement
- LINEAR (lengths x parts) – round length to default measurement
- GRAMS (weight in grams) – round to nearest x grams
- KILOGRAMS (weight in kilograms) – round to nearest x kilograms
- MILLIMETERS (length in millimeters) – round to nearest x millimeters
- METERS (length in metes) – round to nearest x meters
- MILLILITERS (volume in milliliters) – round to nearest x milliliters
- LITERS (volume in liters) – round to nearest x liters

- LINEAR SQUARES METERS – round length and width to nearest x meters
- LINEAR SQUARES MILLIMETERS – round length and width to nearest x millimeters

NOTE: A single rounding factor will be used for both the length and width attributes. Each attribute will not have its own rounding attribute.

LENGTH, WIDTH, HEIGHT, VOLUME & WEIGHT

Predefined default measurements can be captured for each of the above-mentioned fields.

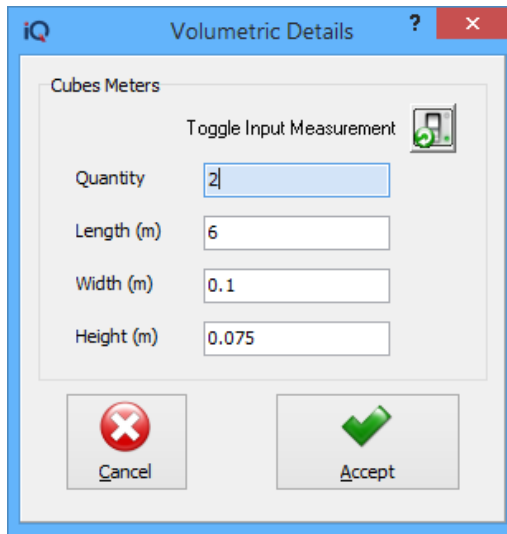
DISALLOW DECIMALS

Remove the tick from the “Disallow Decimals” field, when the units to measure are in meters, liters or kilograms.

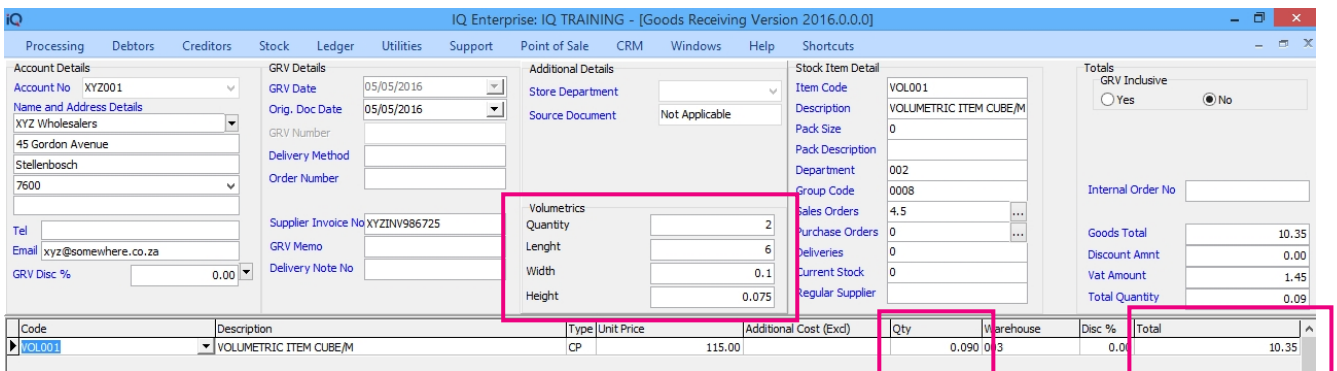
The screenshot shows the 'Stock Amendments' window for item 'VOL001'. The 'Disallow Decimals' checkbox is currently checked and is highlighted with a red rectangular box. Below it, the 'Status' field is visible. The 'Length', 'Width', and 'Height' fields are also visible, with values 0, 0.1, and 0.075 respectively. The 'Unit of Measure' is set to 'Cubes Meters' and 'Rounding' is set to '0'. The 'Pack Size' is 0.000000. The 'Disallow Decimals' field is located in the bottom left section of the main form area.

PROCESSING

If the “Ask for Volumetric Detail Automatically” option has been enabled in the Company’s Default settings (1), the Volumetrics screen will pop-up automatically once the cursor reaches the quantity field for any Volumetric item.



NOTE: If there were any default measurements captured for the item (in Stock Maintenance), these values will automatically be populated in the Volumetric Details. These values can however be override with different values.



The Qty and Total (line Total) fields will display the calculated values for the item. Each Volumetric item’s information will be displayed in the little block above. Click on each item to see the measurements for that specific item.

If the “Ask for Volumetric Detail Automatically” option has not been enabled in the Company’s Default settings (1) or to make amendments to already confirmed measurement data, the dropdown arrow in the quantity field must be used to enter measurement data.

STOCK TAKE

The user has the option to **Enable** Volumetric Detail, when a new Stock Take is setup. This option allows the user to Enable Volumetric Detail only on the Stock Take bin locations or departments where they are required.

STOCK TAKE SETUP

Tick the box next to “Enable Volumetric Detail” and click on OK to finalise the Setup of the Stock Take.

All stock will be counted as normal and captured as normal, but as soon as the user reaches the Count Quantity field for the Volumetrics item, the Volumetrics capturing screen will pop-up to enable capturing of specific measurements. The system will then use these measurements to calculate the quantity as displayed in the Stock count.

Item Code	Description	Available Onhand	Marked Price	Count Quantity
VOL001	VOLUMETRIC ITEM CUBE/M	0	-4.5	72
999980	Testing1	0	0	0
999981	Testing2	0	0	0
999982	Testing3	0	0	0
999983	Testing4	0	0	10
999984	Testing5	0	0	0
999985	Testing6	0	0	0
999986	Testing7	0	0	0
999987	Testing8	0	0	0
999988	Testing9	0	0	0
999989	Testing10	0	0	0
999990	Testing11	0	0	0
999991	Testing12	0	0	0
999992	Testing13	0	0	0
999993	Testing14	0	0	0
999994	Testing15	0	0	0
MON001	Monitor LED 23 "" - Serial Number Item	0	0	0
RC002	Armed Respons	0	0	0
JCI001	Job Card Stock Item - 1	0	0	-5

After capturing the stock quantities, the user click on the volumetrics items and the measurements will be displayed in the top right half of the screen, as seen above.

To see the measurements for the next volumetrics item, move the cursor to the specific item and the captured measurements for that item will be displayed.

--- End of document ---